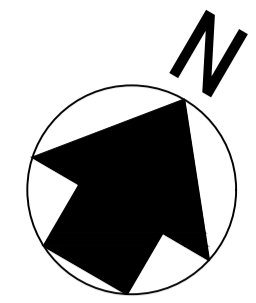
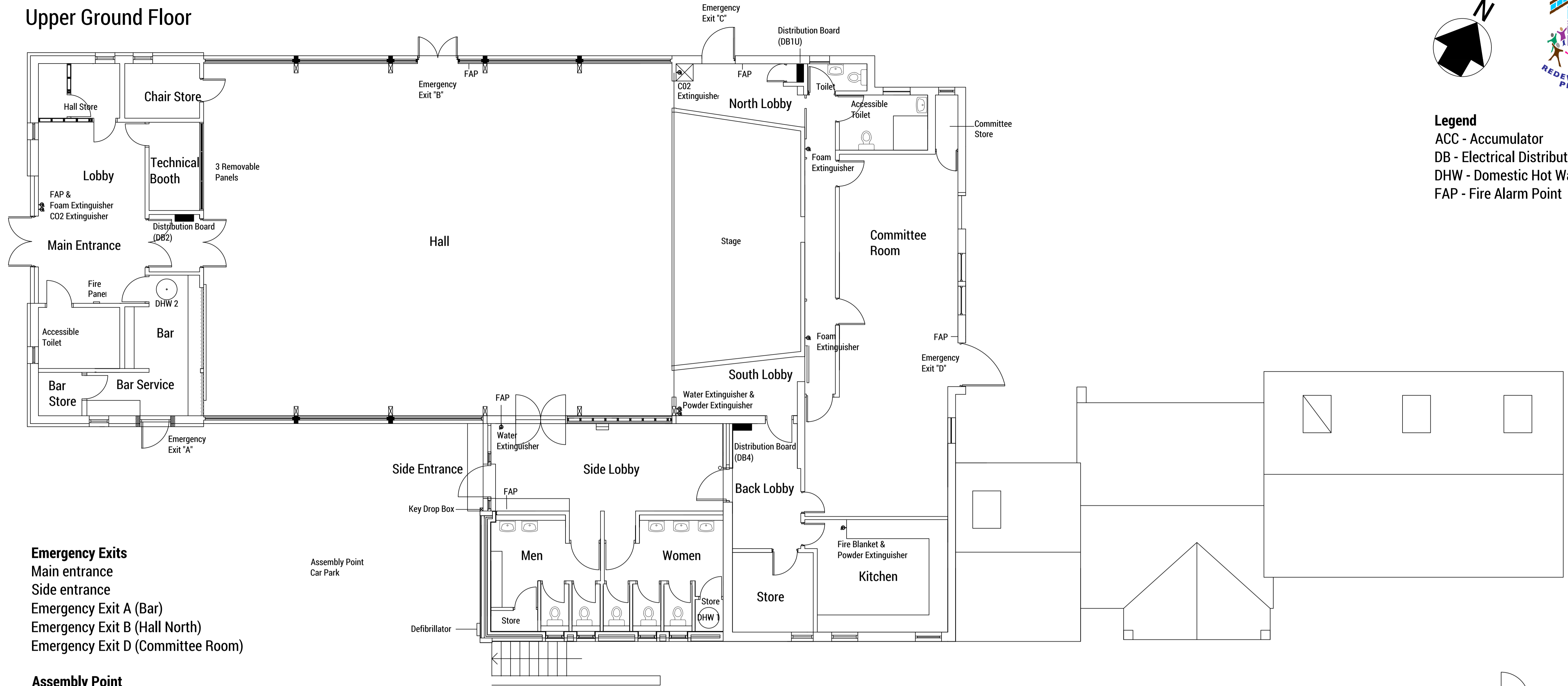


Upper Ground Floor



Legend
 ACC - Accumulator
 DB - Electrical Distribution Board
 DHW - Domestic Hot Water
 FAP - Fire Alarm Point

Emergency Exits

- Main entrance
- Side entrance
- Emergency Exit A (Bar)
- Emergency Exit B (Hall North)
- Emergency Exit D (Committee Room)

Assembly Point

- Car Park

Fire Equipment

- Water (3): Side lobby, South lobby, Gym lobby
- Foam (3): Main entrance, Stage corridor (2)
- Powder (2): South lobby, Kitchen
- CO2 (2): Main entrance, North lobby
- Blanket (1): Kitchen

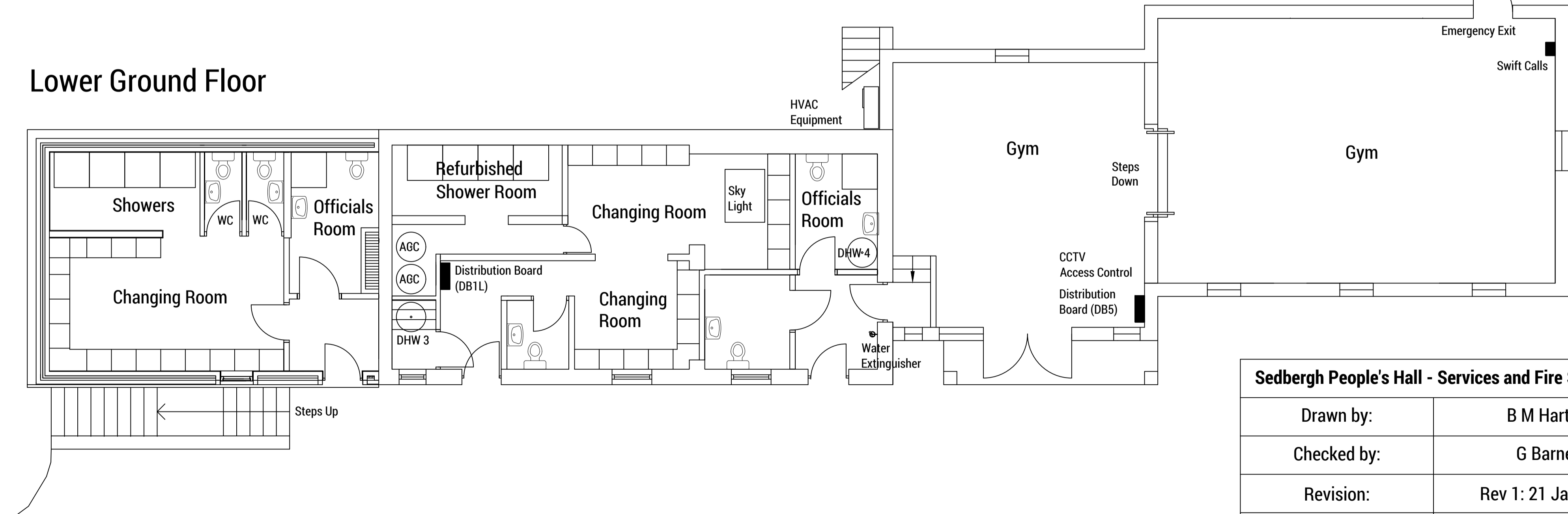
Electrical Distribution

- DB1U - Main Board
- DB1L - Changing rooms
- DB2 - Front lobby, Bar, Technical booth, etc
- DB3 - not used
- DB4 - Back area
- DB5 - Gym

Plumbing

- DHW1 - Upper Toilets and Kitchen
- DHW2 - Bar (loft above Technical Booth)
- DHW3 - Changing rooms
- DHW4 - Gym (loft above Officials room)

Lower Ground Floor



Sedbergh People's Hall - Services and Fire Safety Plan	
Drawn by:	B M Hartley
Checked by:	G Barney
Revision:	Rev 1: 21 Jan 2016
Date:	1 Dec 2015
Scale:	NTS